

ICOM[®] INSTRUCTIONS

CLONING SOFTWARE CS-F100

■ System requirements

To use this program, the following hardware and software are required:

- Microsoft® Windows® 95/98/Me
- RS-232C serial port
- At least 640 × 480 pixel display
- OPC-1122 CLONING CABLE (Cable adapter + DB9 Female /DB25 Male serial cable)

NOTE: Depending on your Windows system files, the PC may require rebooting. In this case, repeat the installation from the beginning.

■ Getting started

- ◇ This cloning software is designed to perform data setting and cloning for the IC-F110/F111/F121 /F210/F211/F221 VHF/UHF FM TRANSCEIVERS.
- ◇ **HELP WINDOW:** Each item has a help window to describe functions and operation.

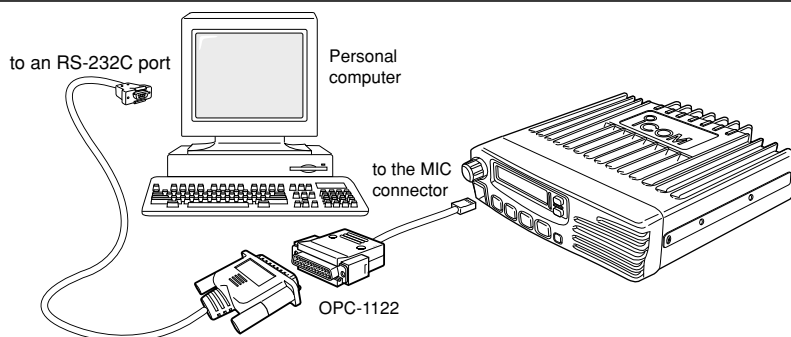
■ Software installation

◇ Installation

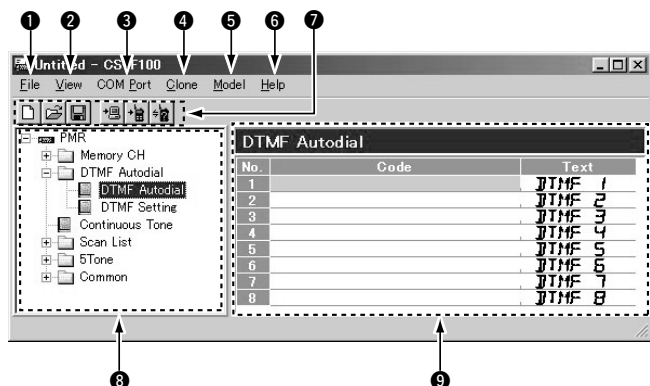
- ① Boot up Windows.
 - Quit all applications when Windows is running.
- ② Insert the disk into the appropriate CD drive.
- ③ Select 'Run' from the [Start] menu.
- ④ Type the setup program name with full path name, then press the [Enter] key. (e.g. D:\csf100\setup [Enter])
- ⑤ Follow the prompts.
- ⑥ Enter the product ID number in the following manner.
 - ID number: 263701 - (6 digit Serial number)
 - e.g. the Serial number on the CD is 000001, enter "263701-000001" as the ID number.
- ⑦ Program group 'CS-F100' appears in the 'Programs' folder of the start menu.

■ Connections

All cloning operations are performed from the computer's keyboard—the operation required on the transceiver side is:
Pushing and holding the power switch to turn power ON.



■ Screen description



① FILE MENU [File]

Used for saving memory channel contents, printing the pre-programmed information or exiting the program, etc.

② VIEW MENU [View]

- Displayed Font Size is selectable.
- Turn the toolbar indication ON or OFF.

③ COM PORT MENU [COM Port]

Click to display the COM port setting dialog box.

- Set the COM port (RS-232C port) number properly.
- Set the transfer speed (Normal or High).

NOTE: 'Check the following' dialog box appears when the RS-232C serial port is not set correctly.

④ CLONING MENU [Clone]

Click to display cloning menu and cloning information dialog box.

⑤ MODEL MENU [Model]

Click to select LMR (2Tone/DTMF) or PMR (5Tone/DTMF).

⑥ HELP MENU [Help]

Click to display help contents and cloning software revision information.

⑦ TOOL BAR

Short cut keys appear on the tool bar when clicking the tool bar function in the [View] menu.

⑧ TREE VIEW MENU

Select the item that you want to edit.

⑨ PROGRAM SCREEN

Displays the channel or editable item information.

■ Before starting the programming

Read all the transceiver cloning data into the PC before starting editing with this software. Otherwise the frequency data may not be cloned properly to your transceiver.

- Select the optional signaling unit type, if required. Select the bank type when you select SmarTrunk.
 - 16 Bank are available for 256 CH.
- Select the model type.
 - LMR: Land Mobile Radio. 2Tone function available.
 - PMR: Private Mobile Radio. 5Tone function available.

■ Memory CH

The 'Memory CH' window allows you to edit the channel information.

◇ Bank Operation/Bank

- ① Click the desired cell, then right click to display the [Edit] menu and then click [Edit...Enter], or double-click the desired cell or data area in the memory channel list directory.
- ② Editable items; Text, SmarTrunk, Capa, Atr, Inh, RX/TX Frequency, TX Inh, W/N, RX/TX C.Tone, Text, Compander, TOT, RF Pwr, Lockout, Scan, etc.

/// **NOTE:** Program the RX frequency first, otherwise no setting can be done.

■ DTMF Autodial

◇ DTMF Autodial/ Setting

Edit the DTMF Autodial Code, Emergency Code (LMR), Log/ID Code (LMR), and then set the DTMF Timer, First Timer and * # Timer.

■ Continuous Tone

Edit the specified receive and transmit frequencies respectively.

■ Scan List

◇ Scan List

Set the Scan Mode condition, Text which appears during scan and Text ON or OFF.

◇ Scan Setting

Set Stop Timer, Resume Timer, Power ON Scan and Auto CH Call (PMR).

■ 2Tone (for LMR only)

◇ Code CH

Set Freq. 1st/2nd, Tone Period 1st/2nd, Text, Code Type, Group Call, Bell, ANS, EXO, Beep, Auto TX, Stun and Scan items.

◇ RX Code Setting

Set Notone Timer, Group Timer, EXO Timer, Beep Repeat Timer and Auto TX Timer items.

■ 5Tone (for PMR only)

◇ RX Code CH

Set items such as RX Code, Text, ID Dec, Bell, Emer Cancel, ABC, EXO, Beep.

◇ RX Code Setting

Set items such as Link A Timer, Compare Digit, ID Decode Timer, EXO Timer.

◇ TX Code CH

Set TX Code, Input Digit, Text, Update, ABC Dec/Aud and Sel items.

◇ TX Code Setting

Set items such as Long Tone Timer, Link R/1/2 Timer, Lead out Delay Timer, ABC Decode Timer.

◇ Format

Set Tone Period, Notone Timer and Tone Length items.

◇ User Tone

Set Encode and Decode Low/High items.

■ Common

◇ Key & Display Assign

Set Up/Down/P0/1/2/3 key condition, Moni, Scan and Prio A for the programmable key assign. Set Opening Text, RF Power Selection, MR/Code Display and SmarTrunk Key for the display assign.

◇ Set Mode

Set Backlight, Beep, SQL Level and AF Min Level conditions.

◇ Common

Commonly set items such as Clone Comment 1/2, User Password, PWR ON Password, Transceiver Data Out, Timer A/B, Inactive Timer.

◇ Expert

Expertly set items such as Fast/Slow Scan Timer, TX/RX DTCS Inverse, User CTCSS Freq(Hz), Emer SW ON/OFF Timer, Emer Start/Repeat.

◇ Character Editor

You can make your original characters and indicate them on the LCD (Max. 16 characters).

NOTE: The above instructions are for reference only. Please refer to the HELP file of the cloning software for the function or setting details.

Microsoft and Windows are registered trademarks of Microsoft Corporation in the U.S.A. and other countries.
Icom, Icom Inc. and the ICOM logo are registered trademarks of Icom Incorporated (Japan) in the United States, the United Kingdom, Germany, France, Spain, Russia and/or other countries.